

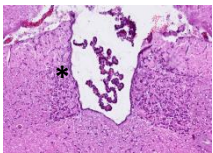
As a complement to *in vivo* animal model testing, CNS|CRO offers a variety of immunofluorescent, immunohistochemical, and staining services for assessment of experimental tissues.



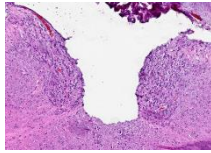
We provide a variety of histology services including:

Staining

H&E



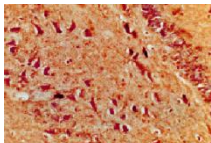
Positive control



Negative control



Timm staining
w/ Cresyl counter

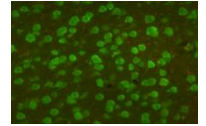
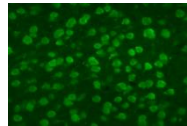


Somatostatin (DAB)

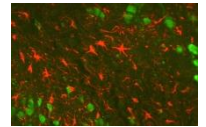
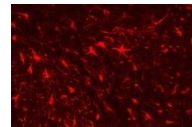
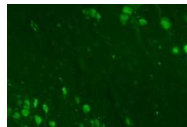
Double Labelling:

NeuN (neurons; green) & GFAP (glial cells; red)

Control



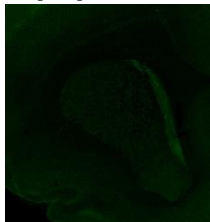
Model



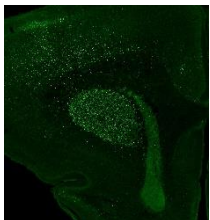
Merged Image

Neonatal Hypoxia-Ischemia Model

Apoptotic Activity Assessment



Control

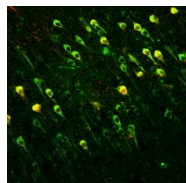


24 Hr
Post-Stroke

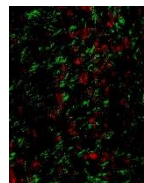
TUNEL Staining

**Contact us for
more details!**

Oligodendrocytic Markers



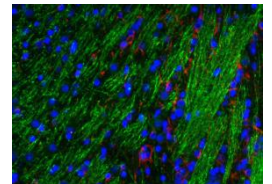
GSTpi (red)
GFAP (green)



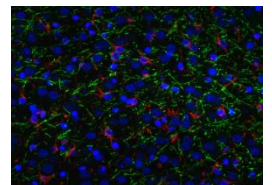
SOX10 (red)
MBP (green)

Triple Labelling:

Control



Model



Green = Myelin Basic Protein
Red = GFAP **Blue** = DAPI