

As a complement to *in vivo* animal model testing, CNS|CRO offers a variety of immunofluorescent, immunohistochemical, and staining services for assessment of experimental tissues.

We provide a variety of histology services including:



### Basic Staining:



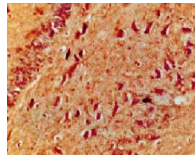
H&E



Cresyl Violet



Timm staining  
w/ Cresyl counter

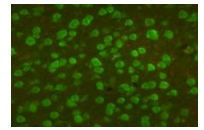
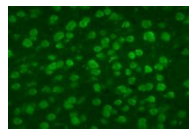


Somatostatin (DAB)

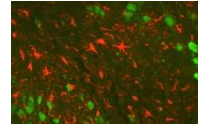
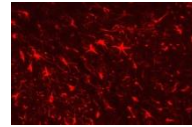
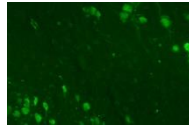
### Double Labelling:

NeuN (neurons; green) & GFAP (glial cells; red)

Control



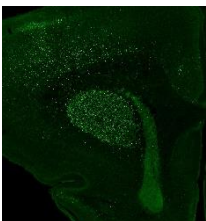
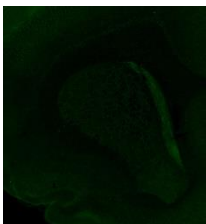
Model



Neonatal Hypoxia-Ischemia Model

Merged Image

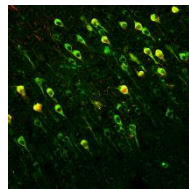
### Apoptotic Activity Assessment:



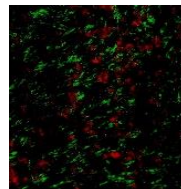
TUNEL Staining

Control

### Oligodendrocytic Markers:



GSTpi (red)  
GFAP (green)



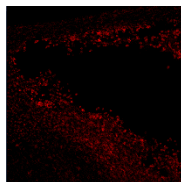
SOX10 (red)  
MBP (green)

24 Hr  
Post-Stroke

### Activated Microglial Marker:



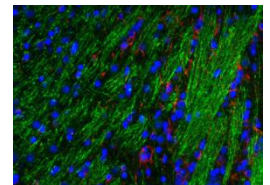
Iba-1 Sham Control



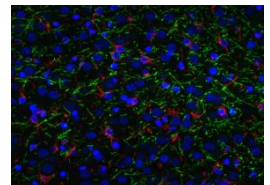
Iba-1 NHI Stroke

### Triple Labelling:

Control



Model



Green = Myelin Basic Protein  
Red = GFAP    Blue = DAPI

**Contact us for  
more details!**